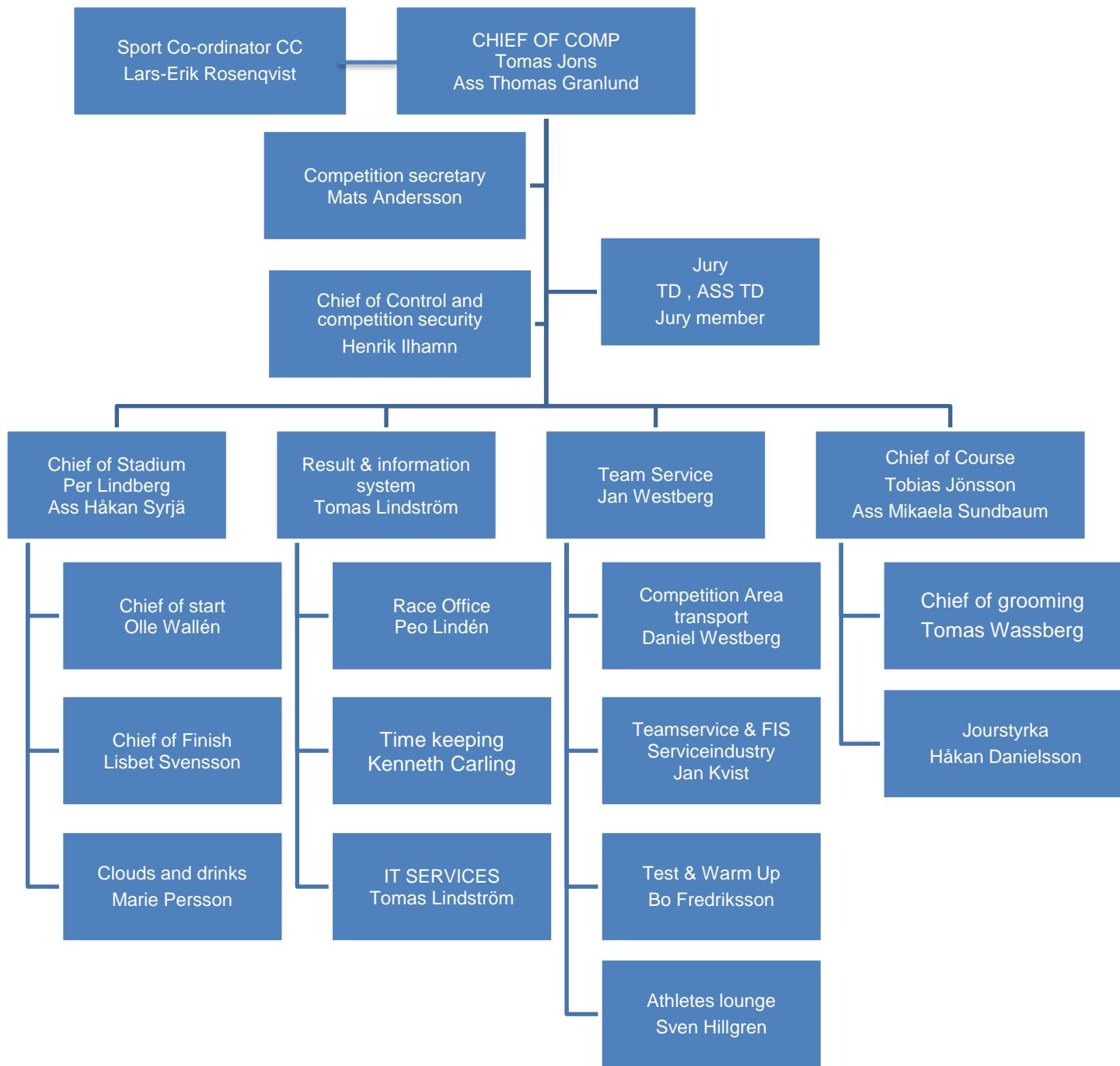


Tävlingsledning

Utmaningar

- Lång tid
 - 10 tävlingsdagar
 - 17 dygn av 120% leverans
- Hög anspänning
 - Stor uppmärksamhet
- Del av stor organisation





Tävlingsorganisation

Lösningar

- Basen är WC organisationen
- Förstärkt med
 - FIS TD
 - Pistmaskinsförare
 - Föråkare



Utmaningar

- Säkerhet längs banan
 - Tältning
 - Norrmän...
- Saltning

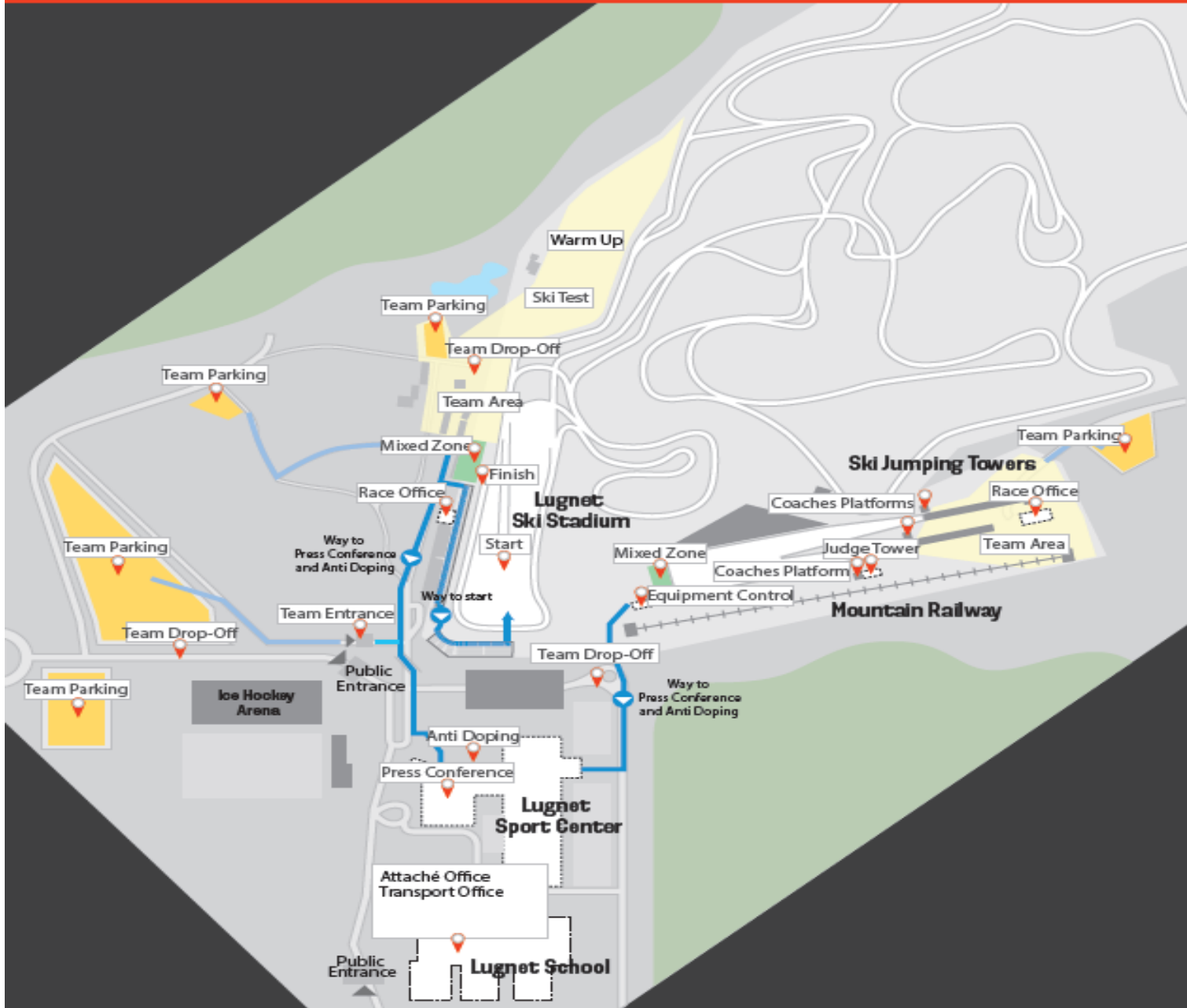


Tillgångar

- WiFi
- Pistmaskiner
 - 2 PB400 vara av en med 4spårplattor
 - 2 PB 100
- Skotrar & 4-hjulingar
 - Tillräckligt många...
- Små prepareringsutrustning
 - 4st Ginzu Groomer



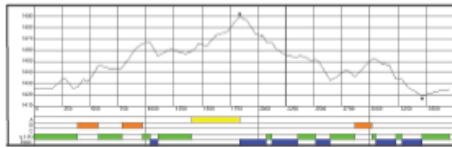
Arena Overview



Bansystem

- En klassisk bana (röd) för första delen av tävlingar
- En fristilsbana (blå) för avslut av tävlingar
- Kombinationer upp till 10km (5km röd + 5km blå) varav en 7,5km i en slinga

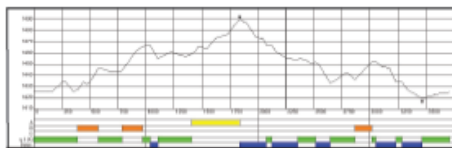




5 km Red

Course Length: 3702 m
Height Difference: 71 m
Maximum Climb: 33 m
Total Climb: 181 m

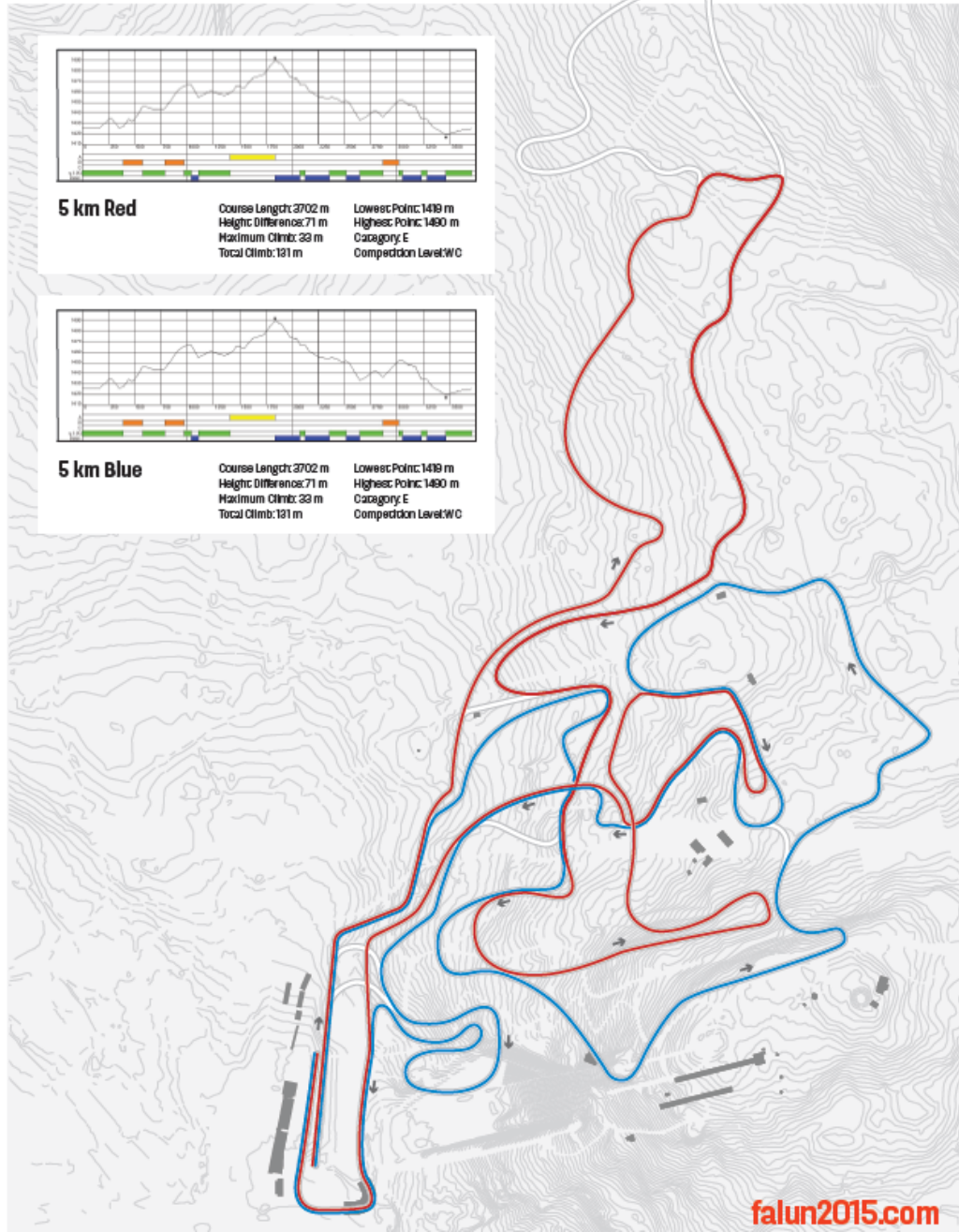
Lowest Point: 1419 m
Highest Point: 1490 m
Category: E
Competition Level: WC



5 km Blue

Course Length: 3702 m
Height Difference: 71 m
Maximum Climb: 33 m
Total Climb: 181 m

Lowest Point: 1419 m
Highest Point: 1490 m
Category: E
Competition Level: WC



Stadion

- Ny Team area
 - Nära till stadion
 - Direkt anslutning till test och uppvärmning
- Väg till start
 - Utmaning är längd/tid
- Stor stadion
 - Men ändå trångt...



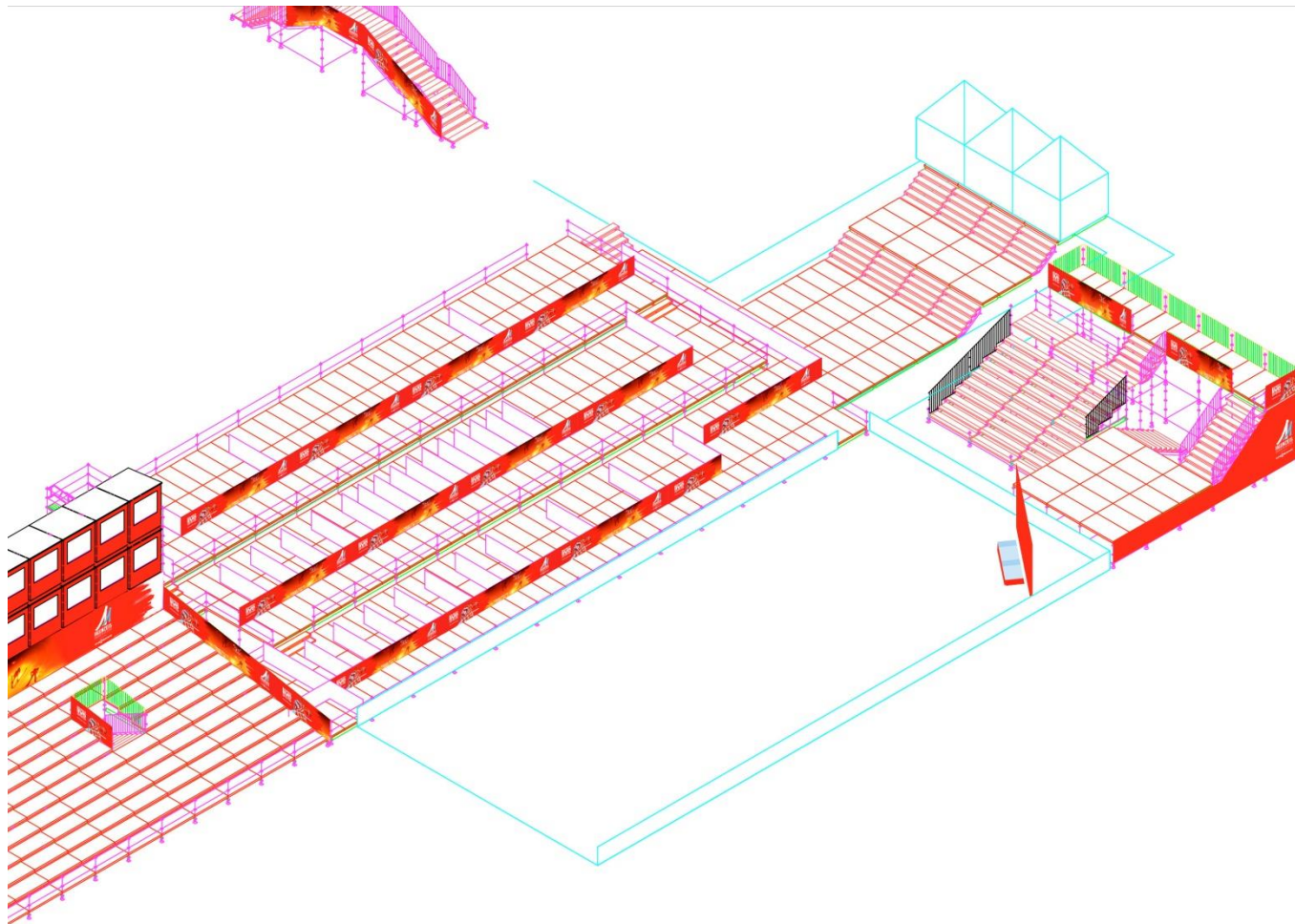


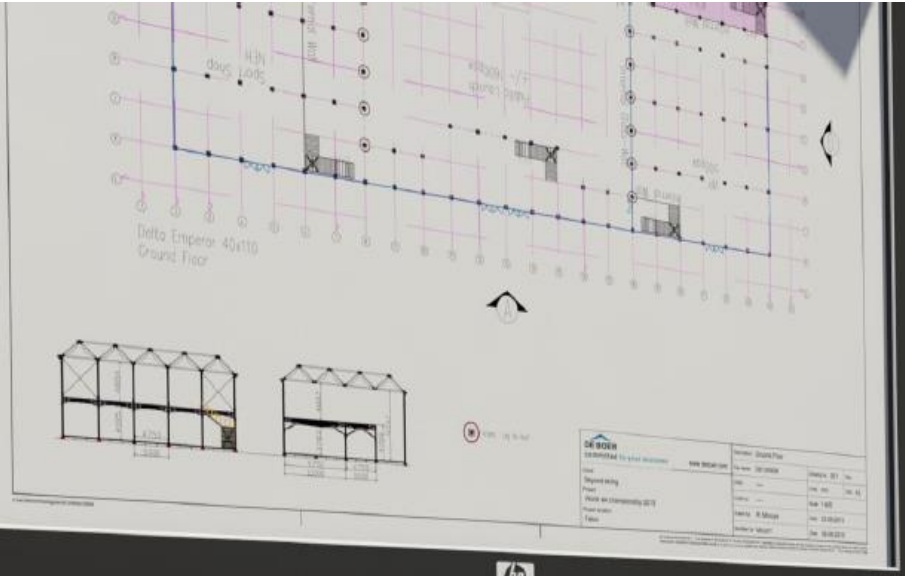
FALUN2015
FIS MEN'S WORLD CUP CHAMPIONSHIPS
SWEDEN 18.02-01.03

PRESENTED BY

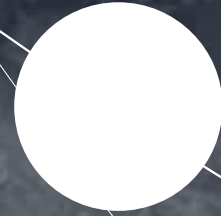
VIE MANN

Winner Presentation CC & NC





NOW IT'S TIME TO TAKE THE SPORT TO



A LEVEL NEVER EXPERIENCED BEFORE



Using new technology we'll be able to update information on race and event progress in a way never seen before.

USE CASE



Live event detail

- Schedule (live highlighted)
- Real time race tracking
- Instant leader board updates
- Real time environmental detail



Static Event Detail

- Previous competition
- Athlete history
- Event history
- News
- Schedule (live highlighted)



Location / Support Activity

- Local entertainment
- Sponsor advertising (TBC)
- Route and parking
- Logistics, F&B



Uppdrag FIS TD

- Control and Competition security
- Task force
- Henrik Ilhamn ansvarar för gruppens arbete



Uppdrag FIS TD

302.3.6 The chief of control and competition security is responsible to organise together with the Jury the suitable placing of controllers, to collect all pertinent information and control cards after the competition and to report any incidents to the Jury.

Two controllers are necessary for each post. The number and placing of the controllers is determined without notifying the competitors, coaches or other officials. The controllers at each post record violations and the passing of the competitors. They may use video equipment. After the competition they must inform the chief of control and competition security of any violations to the rules and be ready to testify before the Jury.

